

Britebleach TAED

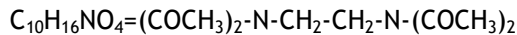
Tetra Acetyl Ethylene Diamine Granules

CAS nr: 10543-57-4

Einecs nr: 234-123-8

Product information

Synonyms: N,N'-ethylenebis[N-acetylacetamide], N,N'-ethylenebis(diacetamide),



Britebleach TAED is the activator of bleaching agent sodium percarbonate (Britebleach SPC). In itself, Britebleach SPC only starts to release active oxygen at temperatures above 60°C. Britebleach TAED reduces the working temperature to 40°C, ambient washing and paper bleaching temperatures. Britebleach TAED can be supplied in colored form (blue, green and red). The range of addition percentages of Britebleach TAED in white washing powders and stain bleaching powders is such that in colored form Britebleach TAED provides a brilliant speckle.

Britebleach TAED and Britebleach SPC are ECHA/BPR approved for use as a biocide in the European Economic Area and Switzerland (larger than the EU) for: human hygiene, animal hygiene, disinfection, food and animal feed, drinking water, product preservation, slime control.

The annex (page 3) of the Assessmentreport ECHA/BPC/124 on 'Peracetic acid generated from TAED and SPC' states that the manufacture of Britebleach TAED and Britebleach SPC are conform the reference specifications.

Product specifications

	Unit	Specifications
Appearance		Free flowing agglomerate
Colour		White, blue, green, red; other colours on request
Odour		Mild, free of acetic note
TAED content	wt-%	90.0-94.0
Bulk density	g/l	420 - 650
Moisture (Karl-Fischer)	wt-%	< 2.0
Fe content	Mg/kg	< 20
Size distribution (50 g, 5 min.), %	>1.00 mm < 0.900mm	< 1.0 > 90

	< 0.600mm	> 50
	< 0.400mm	< 30

[Change specifications](#)

Commercial

Packaging:

25kg bags, 600kg bigbags, in silotruck (bulk)

Lead time for any quantity Britebleach TAED-white in Europa:

2 weeks (directly from stock)

Lead time for any quantity colored Britebleach TAED:

6 weeks

Technical

Britebleach TAED comes in free flowing granular particles. Particle size distribution can be adjusted to customers request to avoid de-mixing and separation in the final product. Classical colors are white, blue, green, red, but more creative colors can be supplied in minimum batch sizes; yellow, orange, pink, purple.

Copyright Sirius International ©

The information in this datasheet is to the best of our knowledge, true and accurate. Any recommendations or suggestions are made without warranty or guarantee since the conditions of use are beyond our control.