



## Britase Cellulase

### Granulated or spherical enzyme for laundry detergents

#### Product information

---

Synonyms: 1,4-(1,3;1,4)-beta-D-glucan-4-glucanohydrolase, cellulose aspergillus niger, cellulose trichoderma viride, fungal cellulase; C18H32O16

Britase Cellulase is a granulated or pealised enzyme specially designed to improve the performance of laundry detergents at low washing temperatures. Cellulase pearls of any color are forms to upgrade your washing powder, tabs, pods, soap tablets etc. These pearls can be a solution when you like to add color to your formulation plus a cellulose enzyme separated from the other ingredients. We color them with non-staining colorants.

Let your new, lemon or rose perfumed detergent promote itself with the addition of yellow or red cellulase pearls!

Cellulases prevent fuzz and pilling on cotton fabrics. Fuzz and pills formations are nr.1 consumer pains when it comes to attempts to maintain their new garments. Fuzz and pills give the fabric a worn-out appearance, the colours will appear less bright as before and the fuzz and pills can “trap” particulate soil parts which give light coloured items a more greyish appearance. Cellulases contribute in colour maintenance by anti-greying / anti redeposition effects of textiles.

Cellulases can also have a cleaning effect on some fibre containing (beta-glucans) stains like those of cereals and oat meals.

#### Product specifications

---

Description:	granular enzyme product	spherical enzyme product blue, green, red, purple, yellow, silver, gold, other colors on request
Enzyme activity:	cellulase 600 - 800 CU/g	1800 U/g
Physical/chemical:	appearance off white granules bulk density 1.1 - 1.2 kg/l dust content max 70 ng/g	free flowing colored pearls 0.6 - 1.2 kg/l max 70 ng/g
	Composition: sodium sulphate 30 - 50 % calcium carbonate 5 - 10 cellulose 5 - 10 dextrin 5 - 10 polyethylene glycol 5 - 10 fibres 5 - 10	Particle size distribution: diameter $\geq$ 1mm $\leq$ 8.0% diameter 0.22-1mm $\geq$ 87.0% diameter $\leq$ 0.22mm $\leq$ 5.0%
Microbiological:	total viable count Production strain	0 - 50.000 CFU/g NEGATIVE
Storage conditions:	keep packaging intact, cool, dry, away from sunlight Shelf life 1 year	

2 years in closed packing at 15°C

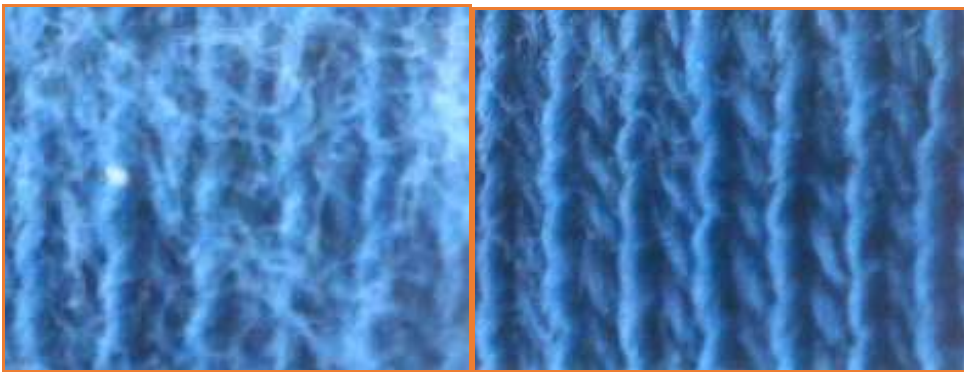
Manufacturing certifications: ISO 9001:2015  
ISO 22000:2018  
Halal

Safety and enzyme handling: Inhalation of enzyme dust, mists should be avoided. In case of contact with the skin or eyes, promptly rinse with water for at least 15 minutes. For detailed handling information, please refer to the appropriate Material Safety Data Sheet.

## Technical

---

Figure 1 & 2) example of pilling prevention of cellulase after 10 x washes. Left detergent without cellulase, right detergent with cellulases. Figure 2 shows a clear pill



We can handle all your color-codes into our cellulase pearls.

## Non-GMO Declaration

---

Britase Cellulase does not contain GMO products and itself is Non-GMO. The organisms producing Britase Cellulase are selected from nature and bred by selecting the strongest strains.

## Packaging

---

The granular product is available in 40kg plastic bags protected by HDPE drums  
The spherical product is available in 25kg plastic bags protected by carton boxes

Classification according to Regulation (EC) No 1272/2008

Copyright Sirius International ©

The information in this datasheet is to the best of our knowledge, true and accurate. Any recommendations or suggestions are made without warranty or guarantee since the conditions of use are beyond our control.